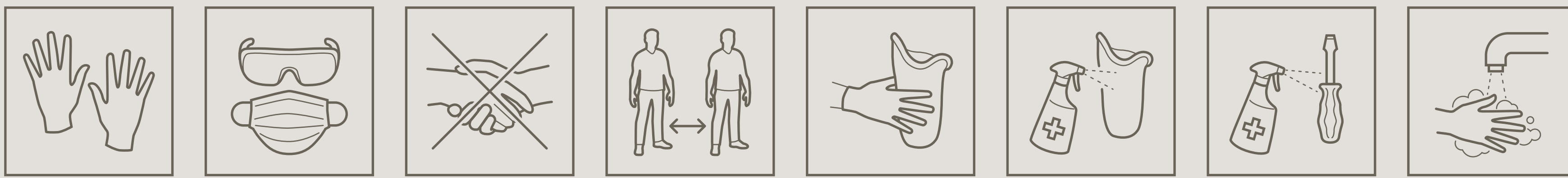


Interacting with patients Protecting yourself and others



Specific hygiene measures and techniques in patient care

PPE

Always use gloves¹ and filter masks² or medical masks for handling patients.

Distance

Avoid direct contact (handshakes & hugs), choose instead another form of greeting. To protect from droplet infection use protective screens⁷ between you and the patient.

Treatment

During treatment reduce close contact to absolutely minimum.

Devices

Handle devices carefully and only make contact with the devices by hand, if possible.

Cleaning

Clean, disinfect^{5,6} and reprocess reusable equipment appropriately before use with another patient.

HHD

Clean hands before and after direct patient contact, before and after cleaning devices and after taking off protective gloves.

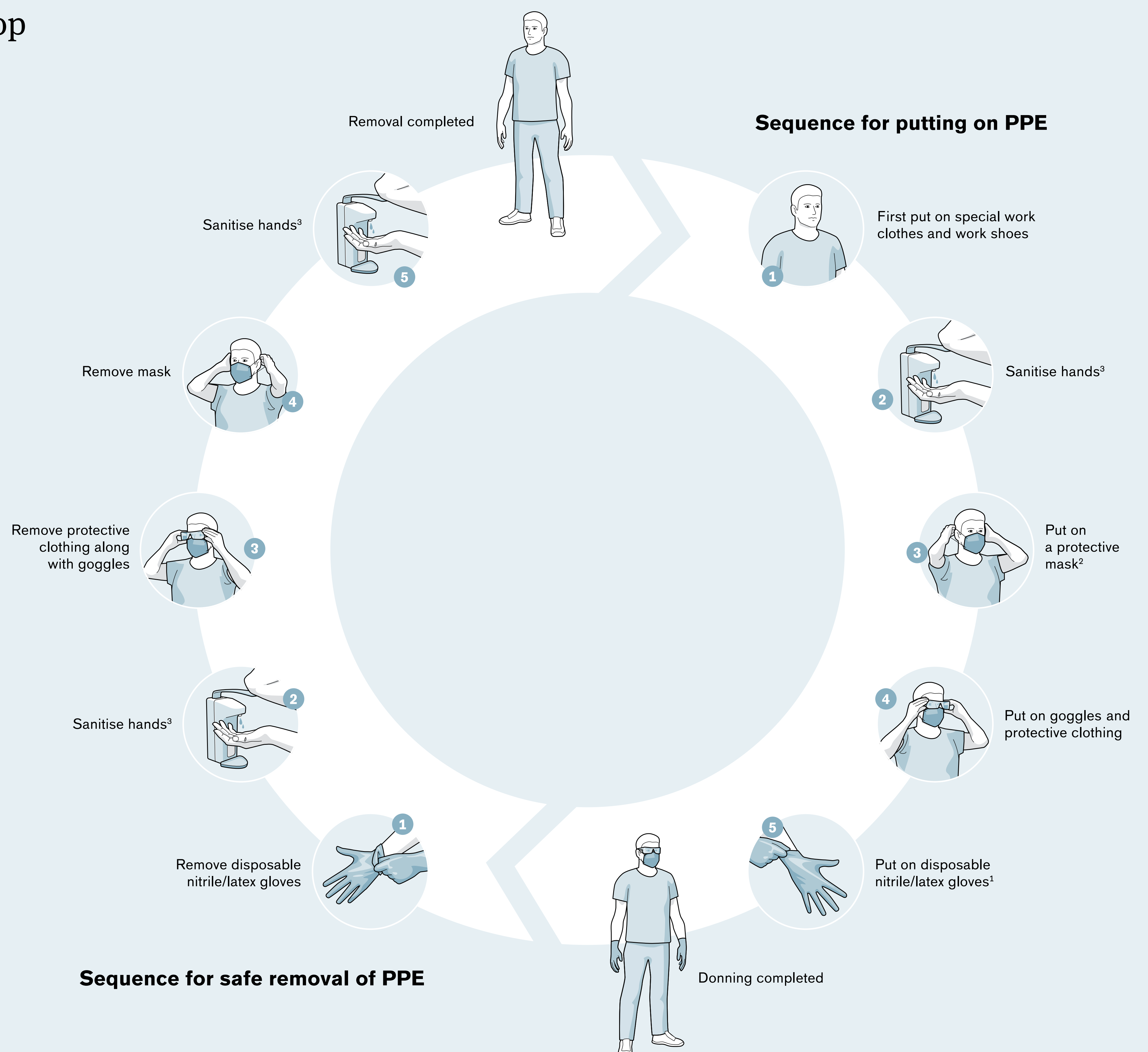
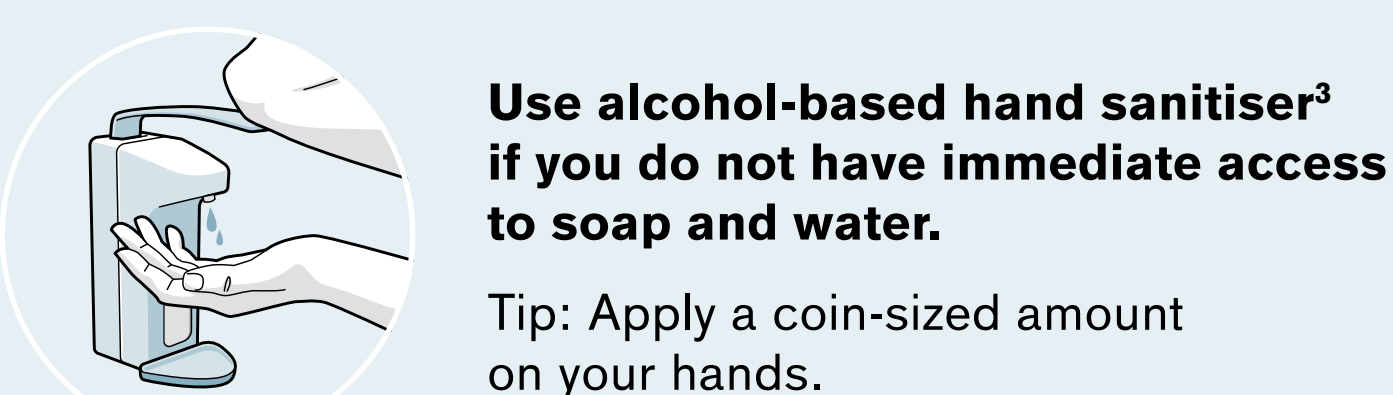
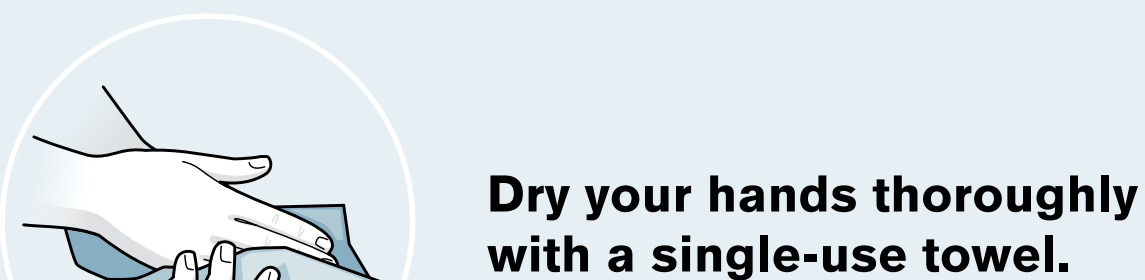
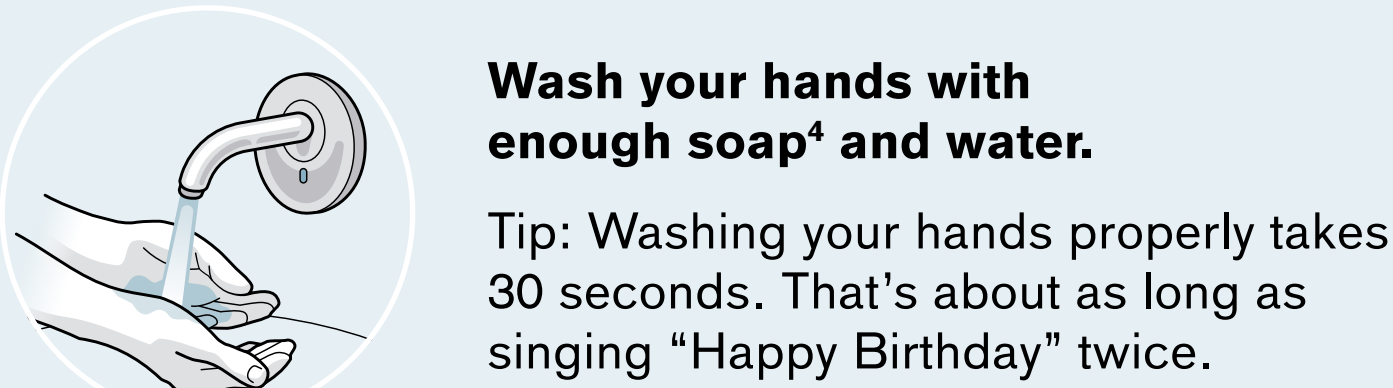
#ottobockcares

General recommendations and techniques in a P&O workshop

Personal protective equipment (PPE)



Hand hygiene disinfection (HHD)



This graphic should be considered as a list of procedures to be added to local, national, and international directives and is not a substitute for established protocols.